

FHDPSY

心理學高級文憑

Higher Diploma in Psychology



資歷架構
Qualifications
Framework

Level 4

Registration Number:
21/00619/13/L4
Valid From:
01/09/2021



本課程已加入持續進修基金
可獲發還款項課程名單內。
44H106259



本課程已加入持續進修基金可獲發還款項課程名單內。本課程（心理學高級文憑）在資歷架構下獲得認可（資歷架構第4級）。
This course has been included in the list of reimbursable courses under the Continuing Education Fund.
This course (Higher Diploma in Psychology) is recognised under the Qualifications Framework (QF Level 4).



課程詳情 [More Details](#)



課程宗旨

- 本課程旨在教授學員心理學的基本知識及技能，並增強他們的共通能力及綜合能力，使學員一方面能夠認識自我、改善人際溝通、培養良好的公民意識；另一方面為將來就業、升學作好準備。本課程將理論與實踐相互結合，使學員具備成為專業輔助人員的基本技能，有助他們於與人本服務有關的範疇發展事業及繼續升學。

課程目標

完成課程後，學員應能：

- 在共通能力（包括語言、人際溝通、量化分析及自學能力）上建立穩固的基礎；
- 理解心理學專業輔助人員所需擁有的理論知識和輔導技巧，並能將兩者結合，從而應用於醫療保健、社會服務等領域；
- 批判性地評價不同心理學理論與方法的適用性，以分析及解決在醫療保健、社會服務領域內有關心理與人際間的問題；
- 展示分析人類行為的能力，以助策劃、評估及提出解決方案；
- 為攻讀學位課程建立學術基礎；
- 在醫療保健、社會服務範疇內為個別人士提供初步的心理評估，以助轉介予專業人士作進一步評估；及
- 培養對本地及國際間的社會政治、文化及經濟議題的興趣及關注。

授課語言

課程授課語言為英語（輔以粵語）。講義和考核均為英文。

Aims

- The programme aims to provide students with knowledge and basic skills in psychology, empower individual's transferable and generic skills for self-understanding, interpersonal communication, further study, employment and active citizenship.
- Specifically, the programme will equip students with initial competency at the paraprofessional level via the blending of psychological theories and practical applications, enabling them to pursue further steps in human service related studies or career.

Objectives

Upon completion of the programme, participants should be able to:

- Develop a solid foundation of generic skills, including languages, interpersonal communication, quantitative and analytic skills, and the ability to learn how to learn;
- Acquire an understanding of theoretical knowledge in psychology and practical skills in counselling at paraprofessional level, and integration of theory with practice, so as to apply these knowledge and skills in the fields of social service and health care;
- Evaluate critically the appropriateness of different theories and methods in psychology to analyse and solve problems in psychological and interpersonal issues in social service and health care contexts;
- Demonstrate skills in presenting and evaluating information related to human behaviour, for planning, assessment, and generating solutions;
- Develop a theoretical foundation upon which further study in psychology at the degree level can be built;
- Make preliminary psychological assessment for people in social service and health care settings so that referrals to professionals for further assessment can be made; and
- Develop an appreciation of the major socio-political, cultural and economic issues in the local and international contexts.

Medium of Instruction

Except for Chinese language courses, lectures will be conducted in English (supplemented with Chinese as appropriate) and teaching notes and course assessments are in English.

修讀年期

2 年全日制

學費 (2023-2024)

[本地學生]
港幣 \$127,400 (分 4 期繳交，每期港幣 \$31,850)

[非本地學生]
港幣 \$166,600 (分 4 期繳交，每期港幣 \$41,650)

課程結構

- 心理學概論
- 個人成長的學習與動機
- 生物及認知心理學
- 發展心理學
- 社會心理學
- 異常心理學
- 正向心理學與個人成長
- 輔導學入門
- 人格理論
- 研究方法與統計
- 應用中文傳意技巧
- 英語溝通技巧 (一)、(二) 及 (三)
- 電腦及數位素養
- 通識科目
- 從實習中成長
- 心理學實習[^]

[1] 學員如在香港中學文憑試英國語文科獲 3 級或以上成績，可豁免修讀「英語溝通技巧 (一)」(ENGL3057EF)。

[2] 非華語學員可獲豁免修讀科目 CHIN4006CF「應用中文傳意技巧」，但須修讀額外的通識教育科目，以符合課程畢業之學分要求。

[^] 課程實習時數不少於 90 小時

Duration

2 Years Full-time

Tuition Fee (2023-2024)

[Local Students]
HK\$127,400 (Paid in 4 equal installments, HK\$31,850 each semester)

[Non-local Students]
HK\$166,600 (Paid in 4 equal installments, HK\$41,650 each semester)

Programme Structure

- Introduction to Psychology
- Learning and Motivation for Personal Development
- Biological and Cognitive Psychology
- Developmental Psychology
- Social Psychology
- Abnormal Psychology
- Positive Psychology and Personal Growth
- Introduction to Counselling
- Personality Theories
- Research Methods and Statistics
- Effective Chinese Communication Skills
- English for Communication I, II & III
- IT and Digital Literacy
- General Education Courses
- Gaining the Most from your Work-integrated Learning
- Work-integrated Learning in Psychology[^]

[1] Students who have attained Level 3 or above in DSE English Language can be exempted from taking English for Communication I (ENGL3057EF).

[2] Non-Chinese speaking students can be exempted from taking Effective Chinese Communication Skills (CHIN4006CF). They will have to take a GE course as replacement for fulfilment of the overall credits for graduation.

[^] Course includes not less than 90 practicum hours

入學資格

申請人須符合以下入學資格：

- 香港中學文憑考試 5 科考獲二級或以上（包括中國語文及英國語文）^註；或
- 成功修畢毅進文憑課程或應用教育文憑；或
- 成功修畢資歷架構第三級文憑或同等學歷課程，如香港專業教育學院 (IVE) 或其他香港高等教育院校頒授的「基礎課程文憑」；或
- 持其他認可之學歷（包括非本地學歷或其他同等學歷 / 經驗）；或
- 年滿二十一歲，最好具有相關工作經驗。

註：

- a. 申請人於公民與社會發展科取得「達標」成績，獲接納為香港中學文憑考試達「第二級」的成績。
- b. 申請人於應用學習科目的成績若為「達標 / 達標並表現優異(I) / 達標並表現優異(II)」，該科目可視作等同於香港中學文憑考試達「第二級 / 第三級 / 第四級」的成績；最多可以計算2科應用學習科目。
- c. 非華語申請人如符合以下其中一種特定情況，本學院會接納其他中國語文成績入學要求：
 1. 學生在接受中小學教育期間學習中國語文少於六年時間，或
 2. 學生在學校學習中國語文已有六年或以上時間，但期間是按一個經調適較淺易的中國語文課程學習，而有關的課程一般並不適用於其他大部分在本地學校就讀的學生。
- d. 本學院接納應用學習中文的成績為其他中國語文科資歷，非華語申請人於應用學習中文獲「達標」成績可視作符合香港中學文憑中國語文科的要求。惟應用學習中文不能作為選修科成績。
- e. 非華語申請人如於香港中學文憑中國語文已符合最低要求（中學文憑考試考獲二級或持有其他中國語文科資歷），申請人毋須以應用學習中文作為符合中國語文科的要求，學院會特別接受他們以應用學習中文作為入讀文憑及副學位課程的選修科目。

升學途徑

畢業生合資格報讀：

- 香港都會大學心理學榮譽社會科學學士三年級
- 香港都會大學經濟及公共政策分析榮譽社會科學學士三年級
- 香港都會大學政治及公共行政榮譽社會科學學士三年級
- 香港都會大學應用社會研究榮譽社會科學學士三年級
- 香港教育大學應用社會研究榮譽社會科學學士三年級
- 香港教育大學特殊教育榮譽文學士三年級
- 香港樹仁大學心理學榮譽社會科學學士三年級
- 香港樹仁大學輔導及心理學榮譽社會科學學士三年級

就業

修讀心理學開啟眾多就業及升學的大門，畢業生可從事任何服務大眾之行業。

Entry Requirement

Applicants are normally required to meet one of the following requirements:

- Level 2 in 5 HKDSE subjects (including English Language and Chinese Language)^{Note}; or
- Satisfactory completion of Diploma Yi Jin or Diploma of Applied Education; or
- Satisfactory completion of a QF Level 3 Diploma or an equivalent programme, for example, Diploma of Foundation Studies awarded by Hong Kong Institute of Vocational Education (IVE), or by a post-secondary institution in Hong Kong; or
- Other acceptable equivalent qualifications (including non-local qualifications obtained in or outside HK, or other qualifications/experience deemed to be equivalent); or
- Mature applicants aged 21 or above, preferably with relevant working experience.

Note:

- a. Applicant possessing "Attained" in Citizenship and Social Development is accepted as level 2 in one HKDSE subject.
- b. Applicants possessing "Attained", "Attained with Distinction (I)" and "Attained with Distinction (II)" results in an Applied Learning (ApL) subject are deemed to have attained "Level 2", "Level 3" and "Level 4" respectively in one HKDSE subject, with a maximum of two ApL subjects can be counted for admission purpose.
- c. For non-Chinese speaking students, LIPACE will continue to accept alternative Chinese qualifications for students who have met the specified conditions:
 1. students who have learned Chinese Language for less than 6 years while receiving primary and secondary education;
 2. students who have learned Chinese Language for 6 years or more in schools, but have been taught an adapted and simpler Chinese Language curriculum not normally applicable to the majority of students in local schools.
- d. While Applied Learning Chinese (for non-Chinese speaking students) [ApL(C)] will be considered as an alternative qualification in Chinese Language (ACL) for the admission of non-Chinese speaking students with "Attained" as the minimum grade required, it will not be regarded as an elective subject for satisfying the admission requirement.
- e. Under the situation where NCS students with ApL(C) do not count the subject as ACL when admission is sought (they use another international qualifications as an ACL or have fulfilled the Chinese Language requirement in the HKDSE), the School will specially accept their ApL(C) as an elective subject for admission to diploma and sub-degree programmes.

Articulation Pathways

Graduates are eligible to apply for:

- Year 3 of Bachelor of Social Sciences (Honours) in Psychology offered by Hong Kong Metropolitan University
- Year 3 of Bachelor of Social Sciences (Honours) in Economic and Public Policy Analysis offered by Hong Kong Metropolitan University
- Year 3 of Bachelor of Social Sciences (Honours) in Politics and Public Administration offered by Hong Kong Metropolitan University
- Year 3 of Bachelor of Social Sciences (Honours) in Applied Social Studies offered by Hong Kong Metropolitan University
- Year 3 of Bachelor of Social Sciences (Honours) in Psychology offered by The Education University of Hong Kong
- Year 3 of Bachelor of Arts (Honours) in Special Education offered by The Education University of Hong Kong
- Year 3 of Bachelor of Social Sciences (Honours) in Psychology offered by Hong Kong Shue Yan University
- Year 3 of Bachelor of Social Sciences (Honours) in Counselling and Psychology offered by Hong Kong Shue Yan University

Career Prospect

The programme provides students with knowledge and basic skills in key areas of psychology that focus on research methodologies, human development, internal mental processes, individual differences, physiological basis of behaviour, individual behaviour in a social context, individual performance at work, and basic counselling, communication and interpersonal skills. Previous graduates have successfully pursued further studies in the fields of psychology, nursing and criminology. Psychology opens the door to careers in an increasing number of sectors and further study and training in psychology can equip graduates for any jobs in which contact with people is required.

你選擇 / 喜歡這個課程的原因 Student Testimonials



The programme covers a wide range of areas of psychology and the courses are taught by experienced psychology lecturers who share the latest theoretical and practical knowledge. There are also opportunities to participate in internships, so students can apply theory to practical situations and enhance practical ability.

- Miracle Zhang, FHDPSP Year 1 student



作為一個內地生，通過這一年的學習，我不僅通過講師生動有趣的講解與耐心解答下，學習了非常多實用的心理學知識；更重要的是我也提高了兩文三語的能力。

- 黃競楠，心理學高級文憑一年級學生



我選擇LIPACE是因為它是一所具有良好聲譽和高品質教育的學校。它非常適合我的學習風格和興趣。除此之外，LIPACE 也為學生提供了許多機會，例如實習和各類活動，讓我們在課餘也有機會充實自己和開拓眼界。

- 岳婧球，心理學高級文憑一年級學生



This programme allows us to understand the cognitive, emotional, social and personality development of individuals at different stages.

This can not only help us understand our own growth process, but also provide useful guidance for education, parenting, career planning and so on.

- Jessica Pan, FHDPSP Year 1 student



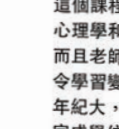
Studying psychology at LIPACE helps me gain a better understanding of other people as well as myself. The knowledge and skills acquired are also important to living a fulfilling life.

- Mark Liu, FHDPSP Year 1 student



課程內容實用和有價值，學習更多知識和技能及提升學術程度，能為將來事業打下基礎。我認為這裡師資優良而且課堂互動元素較多，令同學可以更加容易融入團體。

- 黃家熙，心理學高級文憑一年級學生



這個課程對喜歡心理學的同學是一個很好的選擇。心理學和日常生活的關係密切，可以學以致用。而且老師用心教學，又會以遊戲的形式幫助同學溫習，令學習變得輕鬆有趣，更增強我的學習動力。雖然我年紀大，但如果能順利畢業，我亦會考慮繼續升學，完成學位課程。

- 吳仁泉，心理學高級文憑一年級學生



好有趣，能從心理學多個角度去了解所有事情的發生。而且學校本身有好多活動可以參與，很好玩。原本覺得心理學是很無趣和艱深，想不到日常生活都已經涉及到。

- 謝嘉雯，心理學高級文憑一年級學生



老師上課有趣，對於知識解讀詳細。

- 王譽嫻，心理學高級文憑一年級學生



I have always been interested in human beings. This programme satisfies my curiosity and I have also learned some theories that are important for parenting, like attachment.

- Christina Zuo, FHDPSP Year 1 student

教與學 Teaching and Learning

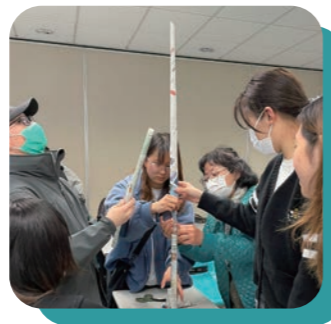


學生在「研究方法與統計」課堂上學習使用數據分析軟件。
Students learning how to use statistical analysis software in "Research Methods and Statistics" class.

跨世代教學 Intergenerational Learning



學生在課堂上與長者學苑的長者進行互動
Students interacting with senior citizens from Elder Academy in classroom



社會情緒學習 Socioemotional Learning

「逆後啟航」職涯設計課 Sailing through Life and my Career Path (SLCP)

Sailing Through Life & My Career Path
「逆後啟航」職涯設計課

課程目標及價值觀
Explore Career Interests and Values Related to Personal Goals, Strengths and Needs

促進個人成長及自我認識
Strengthen Self-Esteem and Facilitate Readiness for Personal Growth

運用強項優勢對生涯
Unlock Inner Strengths and Skills to Face Life's Changes and Challenges

建構個人及職涯身份
Construct Personal and Career Identifiers for The Way Forward

強項為本
Strength-Based

體驗學習
Experiential Learning

反思討論
Reflection & Discussion

培育職涯決策動力
Nurture Decision-Making Efficacy

專題授課 | 完成課程後可獲發證書
Cantonese | Certificates issued upon successful completion of the programme.

Target Group 對象: HKMU LIPACE Higher Diploma Students
Date 日期: February - April 2023
Format 學習模式: Face-to-Face Small Groups & Self-Learning

專案課程設計及導師團隊
For enquiry, please contact 查詢及查詢電話: Dr. Kathleen Chiu (chiuk@hkmu.edu.hk)

Winnie Yeung, Rita Kwok, Dr. Kathleen Chiu, Evelyn Chan, Patrick Wu, Jacky Lee, Alex Lee

「逆後啟航 – 職涯設計課」(SLCP) 為實證為本的簡短課程，旨在培養學生的社交情感能力及培養職涯決策動力*

"Sailing Through Life and My Career Path" (SLCP) is a brief evidence-based psychosocial intervention programme aimed at promoting students' socioemotional competencies and decision-making efficacy*

- * 項目由香港都會大學「質素優化措施」計劃資助
- * Project funded by Hong Kong Metropolitan University's Quality Enhancement Measures (QEM) scheme



社區機構參訪 External Community Visits



老師帶同學生一同參訪新生精神康復會
Students paid a visit to New Life Psychiatric Rehabilitation Association (NLPR) led by teachers

事業發展準備 Professional Readiness

實習 Work-Integrated Learning (WIL)



學生在「心理學實習」課程中被分派到不同機構進行實習工作
Students assigned to different organisations as part of "Work-Integrated Learning in Psychology"



學生受聘於教資會資助大學擔任學生研究助理的工作
Students employed as student research assistants by a UGC-funded university

社區參與

Community Engagement

學生在校內校外協助不同機構推廣社區精神健康教育

Students assisting various organisations in promoting mental health awareness in the School and the community



畢業生分享 Meet Our Graduates



Jowin Chau
2015 Graduate
BSc (Hons) in Psychology
University of Salford, United Kingdom
Working as a Senior Account Manager
at a local property agency



Julian Lam
2020 Graduate
BSSc (Hons) in Psychology
Hong Kong Metropolitan University
Working as a Teacher
at a local special school



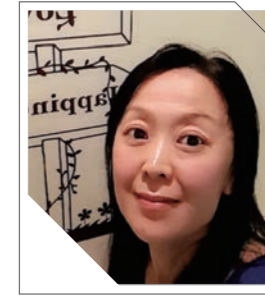
Emily So
2020 Graduate
BSSc (Hons) in Psychology
Hong Kong Metropolitan University



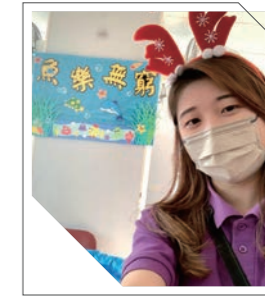
Helen Lau
2020 Graduate
BSSc (Hons) in Psychology
Hong Kong Metropolitan University



Pearl Wang
2021 Graduate
BSSc (Hons) in Psychology
The Education University of Hong Kong



Sabrina To
2021 Graduate
BSSc (Hons) in Psychology
Hong Kong Metropolitan University



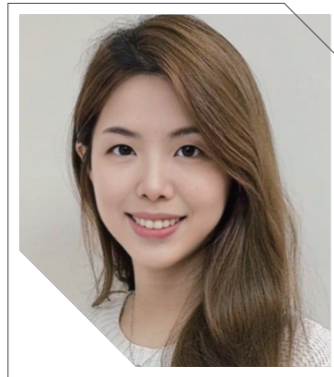
Zoey Leung
2021 Graduate
Working as a Welfare Worker
at a local supported hostel



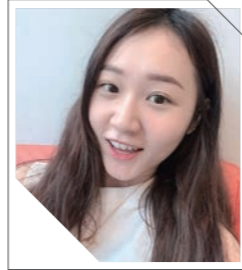
Dione Tai
2017 Graduate
BSSc (Hons) in
Counselling and Psychology
Hong Kong Shue Yan University
Master of Social Work
The Hong Kong Polytechnic University
Working as a Student Counsellor
at a local higher education institution



Miffy Leung
2015 Graduate
BSc (Hons) in Psychology
University of Salford, United Kingdom
Master of Education
The Education University of Hong Kong
Master of Applied Psychology
The Hong Kong Polytechnic University
Worked as a Research Assistant at
a UGC-funded university



Vonice Poon
2017 Graduate
BSSc (Hons) in
Counselling and Psychology
Hong Kong Shue Yan University
Working as a Community Health
Officer at a local NGO



Leona Tung
2022 Graduate
BA (Hons) in Applied Ageing Studies
and Service Management
The Hong Kong Polytechnic University



Natalie Wong
2020 Graduate
BSSc (Hons) in
Counselling and Psychology
Hong Kong Shue Yan University
Working as a Teaching Assistant
at a local special school



Nancy Chen
2021 Graduate
BA (Hons) Psychology Studies
James Cook University Singapore



Chris Chan
2022 Graduate
BSSc (Hons) in Psychology
Hong Kong Shue Yan University



Kenny Cheung
2022 Graduate
BSSc (Hons) in
Counselling and Psychology
Hong Kong Shue Yan University



Lau Chi Tung
2022 Graduate
BSSc (Hons) in Psychology
Hong Kong Shue Yan University



Hilary Li
2022 Graduate
BSSc (Hons) in
Counselling and Psychology
Hong Kong Shue Yan University



Sandy Lin
2022 Graduate
BSSc (Hons) in
Counselling and Psychology
Hong Kong Shue Yan University



Tom Ng
2022 Graduate
BSSc (Hons) in
Counselling and Psychology
Hong Kong Shue Yan University



Lalin Li
2022 Graduate
BSSc (Hons) in
Counselling and Psychology
Hong Kong Shue Yan University



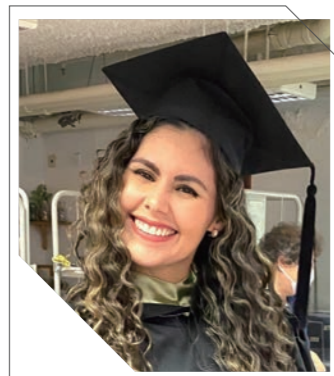
Cecilia Chen
2023 Graduate
BSSc (Hons) in Psychology
Hong Kong Shue Yan University



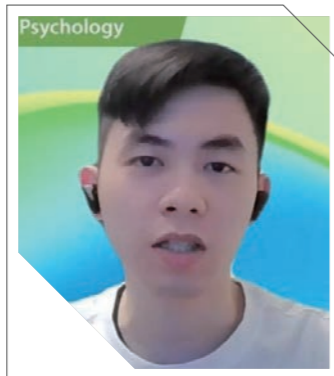
Harry Lam
2023 Graduate
BSSc (Hons) in
Psychology and Mental Health
Hong Kong Metropolitan University



Sherlock Lam
2017 Graduate
BSSc (Hons) in Psychology
Hong Kong Shue Yan University
Master of Human Sexuality
Shu-Te University, Taiwan
Working as a Student Counsellor
at a local secondary school



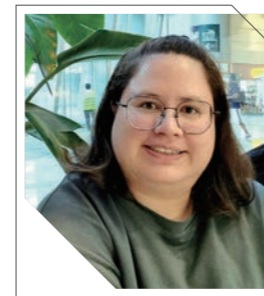
Majely Souza
2019 Graduate
BSSc (Hons) in Psychology
The Education University of Hong Kong
MSc Clinical Psychology
London Metropolitan University,
United Kingdom
Working as a Special Education Needs
Assistant at a local international school



Cody Ng
2017 Graduate
BSc (Hons) in Psychology
University of Salford, United Kingdom
Working as a Psychology Advisor
at a private healthcare company



Nancy Li
2021 Graduate
BSSc (Hons) in Psychology
Hong Kong Metropolitan University
Master of Arts in
School and Community Psychology
The Hong Kong Polytechnic University



Katherine Ortiz Ng
2023 Graduate
BSSc (Hons) in Psychology
Hong Kong Shue Yan University



Karen Yeung
2023 Graduate
BSSc (Hons) in Psychology
The Education University of Hong Kong



Jacky Tsang
2023 Graduate
BSSc (Hons) in Psychology
Hong Kong Shue Yan University



Come Join
Our Psychology Family!



HKMULiPACEFHDPsy



hkmu_lipace_fhdpsy



HKMU LIPACE

www.hkmu.edu.hk/lipace
lipace@hkmu.edu.hk
3120 9988
2381 8456

HKMU Li Ka Shing School of Professional and Continuing Education
Kwai Hing Campus - 8/F-11/F, Tower 2, Kowloon Commerce Centre
51-53 Kwai Cheong Road, Kwai Chung, N.T.

Follow us:

